

How to copy files from desktop to Gateway servers using WinSCP

151 admin October 4, 2024 [Technical](#) 60965

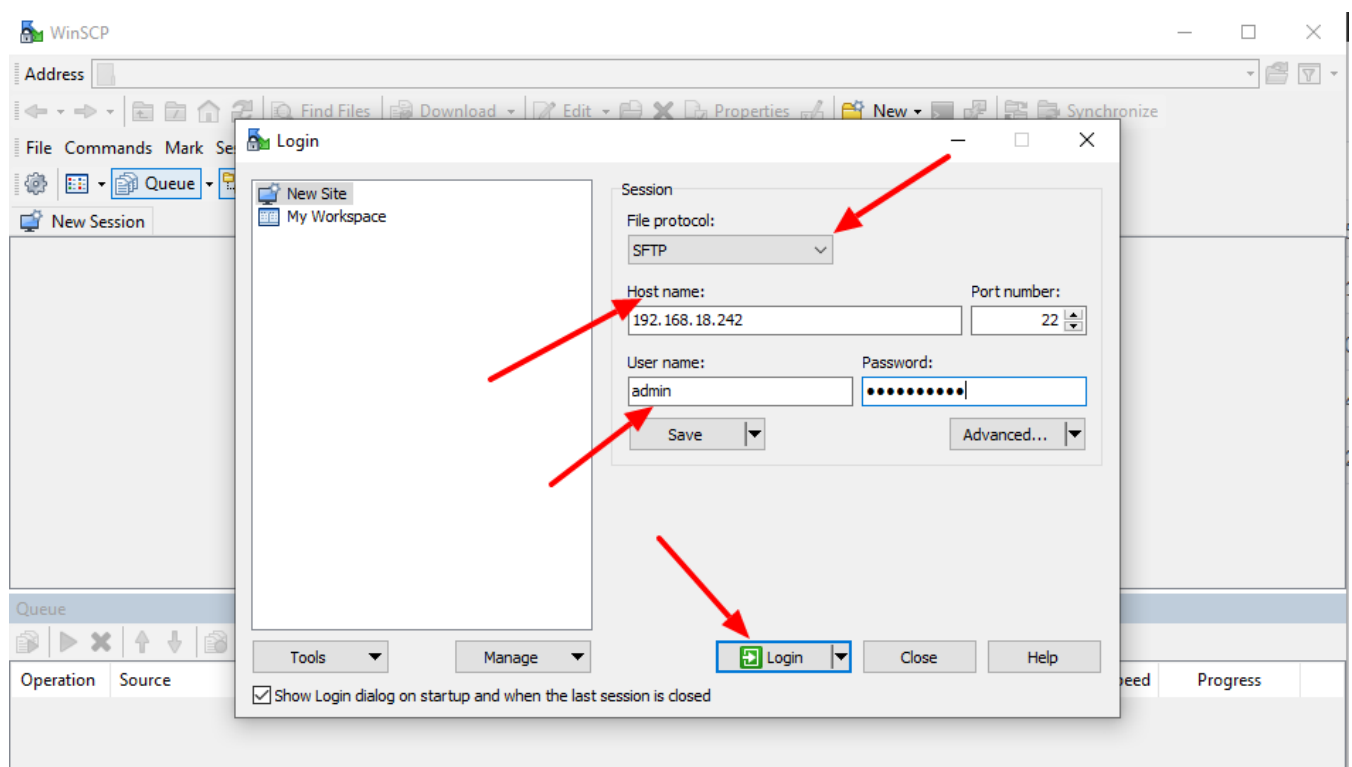
How to transfer files from the local desktop to Ezeelogin gateway?

Overview: This article guides gateway users on how to transfer files to their folder on the Ezeelogin gateway using WinSCP, FileZilla, SCP, or SFTP.

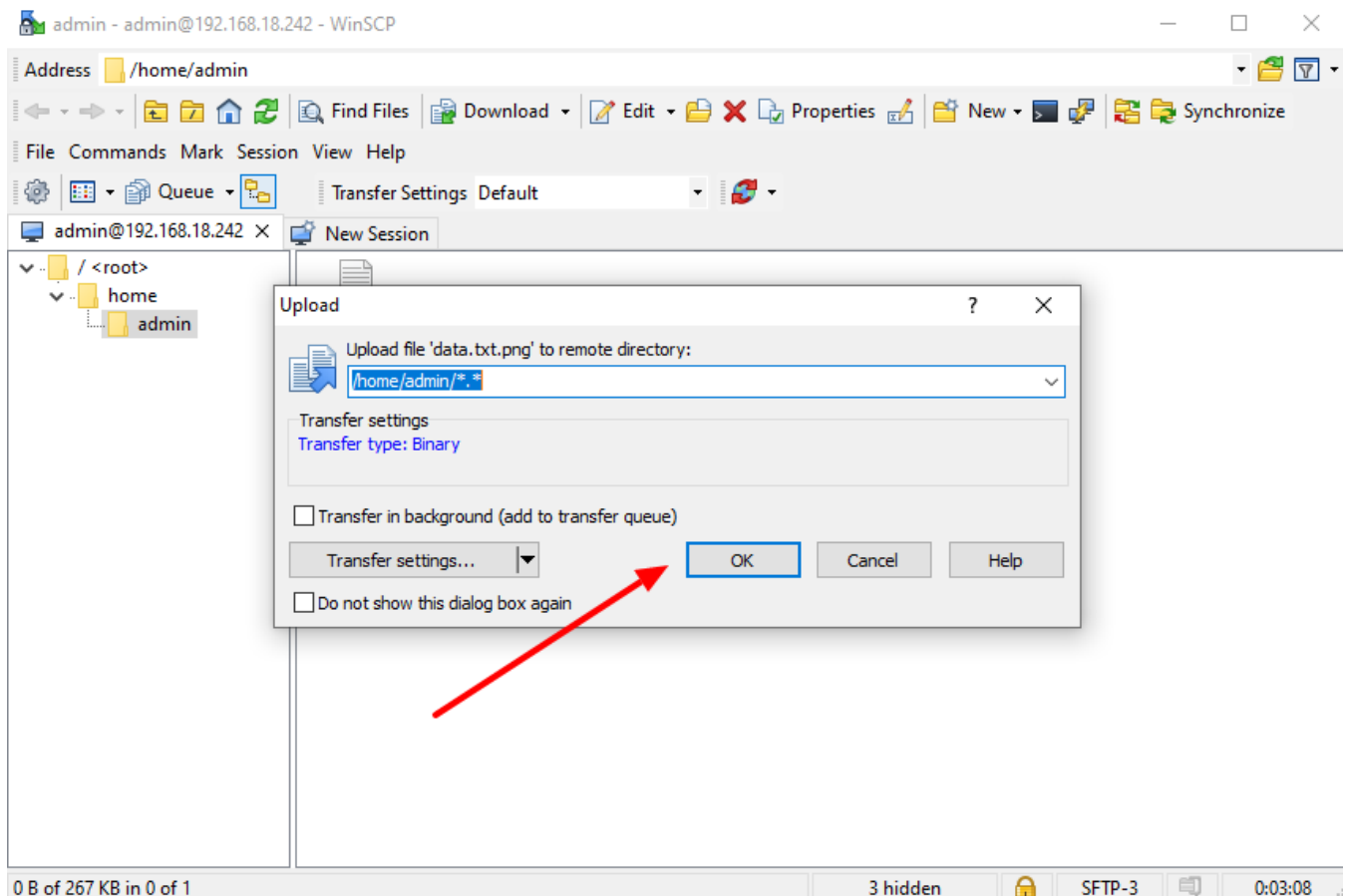
Use '**WinSCP**' or '**FileZilla**' application or '**sftp**' or '**scp**' command to transfer files from your desktop or local machines to the Ezeelogin gateway. Once the file is on the gateway server, you can use the [Secure Copy or Parallel Copy feature](#) to transfer the file to other remote servers behind the ssh jump host.

1. Copy/transfer files from the local desktop to the Ezeelogin gateway using [WINSCP](#) Software.

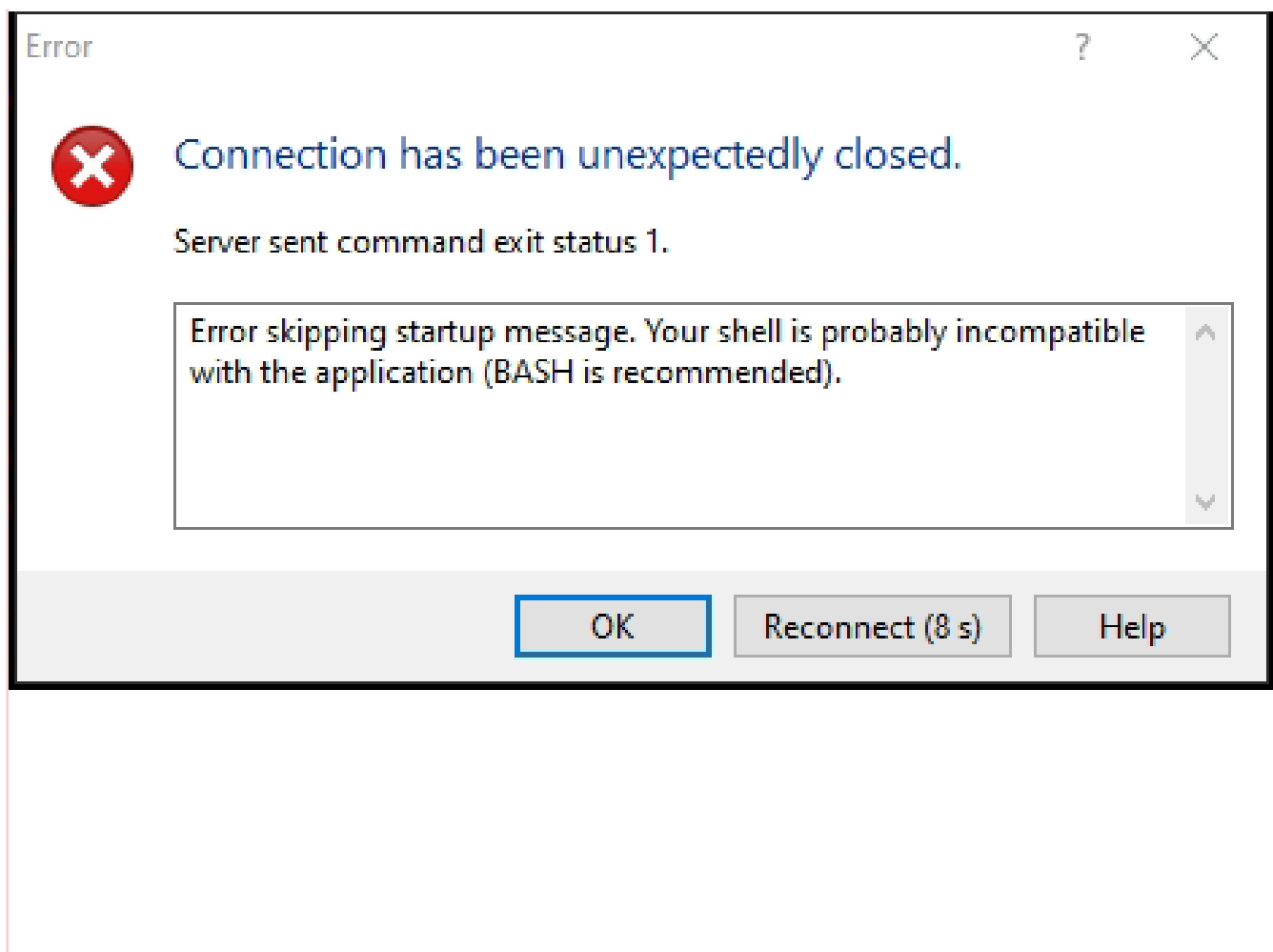
Step 1(A): Open **WinSCP** and select **SFTP** file protocol, provide the hostname, username, password, and port number of the gateway server in the respective fields as shown below. Click on the login button to connect to the gateway server.



Step 1(B): Right-click on the file and click on the **Upload** button to transfer the file to gateway server as shown below. Also, you can drag and drop the file to the gateway user's folder.

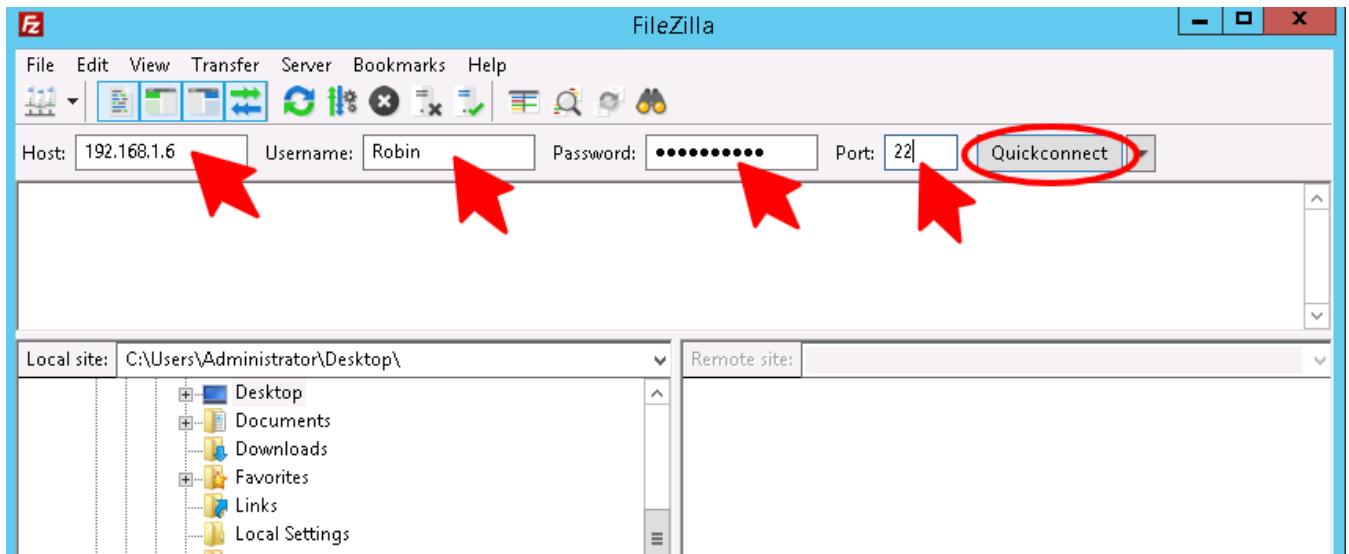


If you use SCP protocol to transfer the file from your desktop to gateway it won't work and will get the following error.

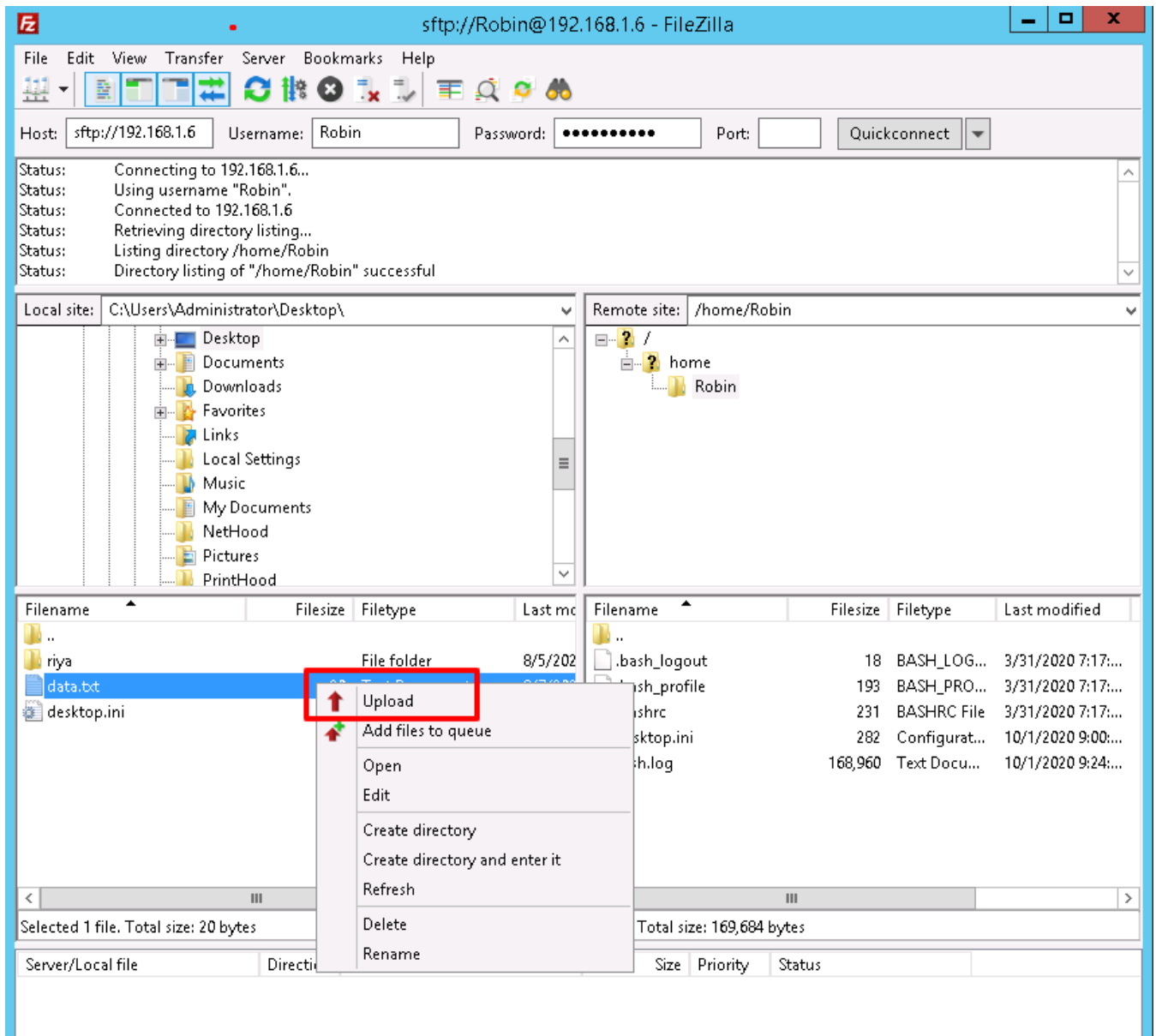


[winscp-screen.png](#)[winscp-screen.png](#)2. Copy/transfer files from the local desktop to the Ezeelogin gateway using [FILEZILLA](#) Software?

Step 2(A): Open the FileZilla application and provide the hostname, username, password, and Port number of the gateway server in the respective fields as shown below. Click on the **Quickconnect** button to connect to the gateway server.



Step 2(B): Right-click on the file and click on the **upload** button to transfer the file to the gateway server as shown below. Also, you can drag and drop the file to the gateway user's folder.



3. Copy/transfer files from local desktop to Ezeelogin gateway using SCP or SFTP commands

Use the gateway username to authenticate via SCP or SFTP to upload files to the gateway user's home directory.

Step 3(A): Using SCP

```
root@desktop:$ scp /your/file/name  
ssh_gateway_user@gateway_server_host:~/
```

Example:

```
root@desktop:$ scp -P30004 logs john@118.211.125.100:~/
```

#This would transfer the file 'logs' from the desktop to the gateway server.

Step 3(B): Using SFTP

```
root@desktop:$ sftp ssh_gateway_user@gateway_server_hostname/IP
```

```
sftp> put your_file_name
```

Example:

```
root@desktop:$ sftp john@192.168.56.123
```

```
sftp> pwd
```

```
Remote working directory: /home/john
```

```
sftp> put ioncube_loaders_lin_x86-64.tar.gz
```

```
sftp> ls  
ezsh.log  ioncube_loaders_lin_x86-64.tar.gz
```

Related Articles:

[Transfer / Copy files from the user's desktop to remote servers via the Ezeelogin gateway](#)

[How to copy or delete a file in the jump server user's home directory?](#)

Online URL:

<https://www.ezeelogin.com/kb/article/how-to-copy-files-from-desktop-to-gateway-servers-using-winscp-151.html>