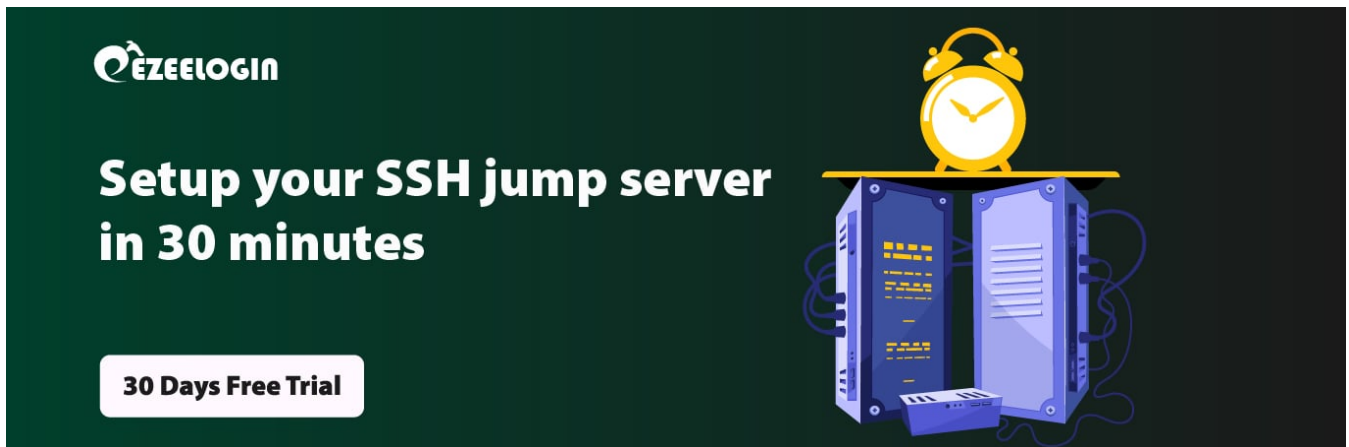


# How to prevent putty window from closing during ssh

305 admin November 19, 2022 [General](#) 27914

A promotional banner for EZEELOGIN. On the left, the EZEELOGIN logo is in white on a dark green background. Below it, the text "Setup your SSH jump server in 30 minutes" is written in white. Further down, a white button with black text says "30 Days Free Trial". On the right, there is a stylized illustration of a blue server rack with its door open, showing internal components. A yellow alarm clock sits on top of the server rack. The background of the illustration is black.

**EZEELOGIN**

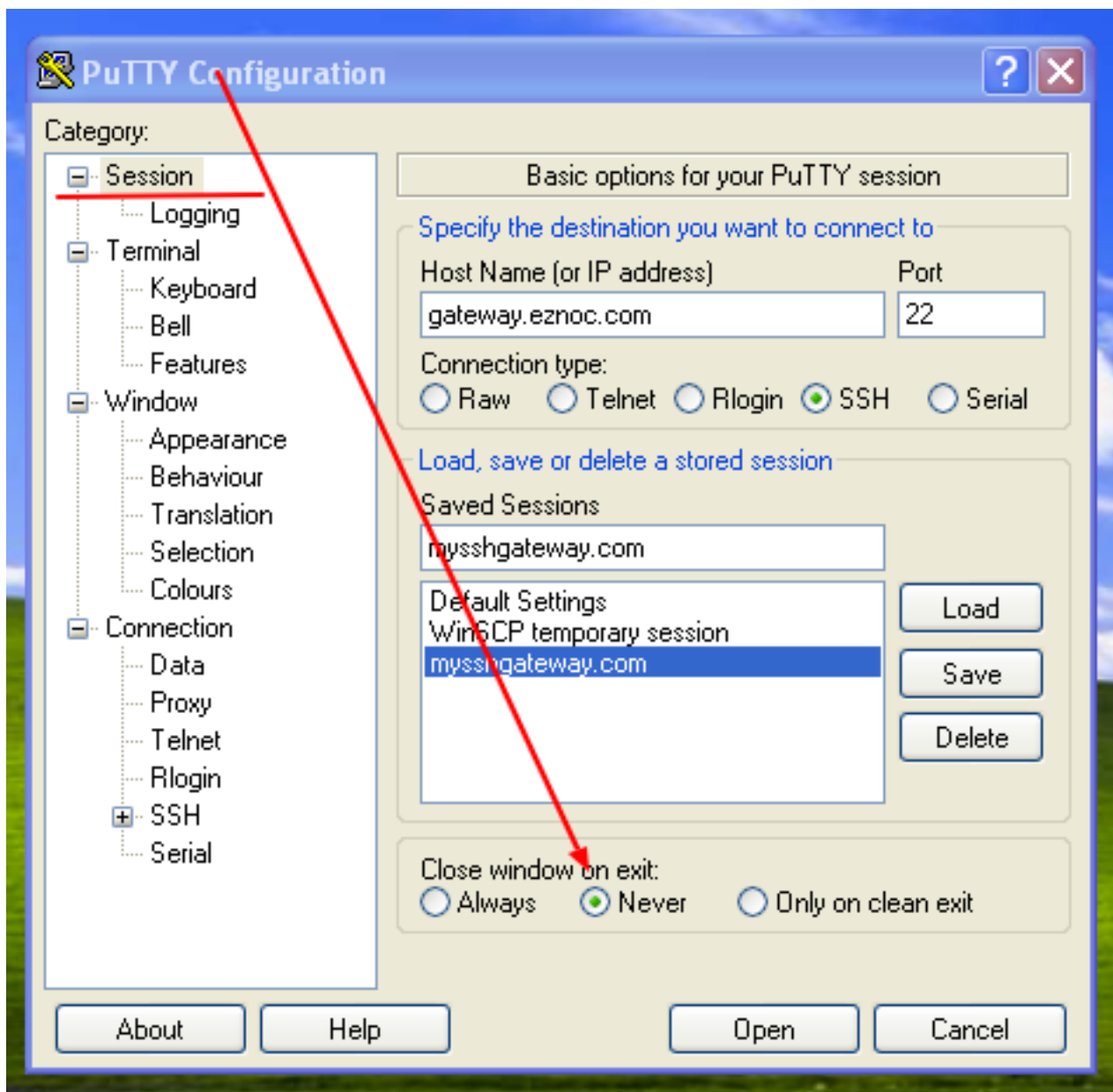
**Setup your SSH jump server  
in 30 minutes**

**30 Days Free Trial**

---

## Prevent Putty windows from closing during ssh sessions to view the error messages on the server side.

By default, the putty windows will close during ssh if there is any error on the server side without showing the error message as to why the session had failed. To ensure that the ssh session windows do not close and to view the error message on the server side, set 'Close Window on exit' to 'Never' under the Session tab as shown below.



This is useful in troubleshooting ssh failure during ssh access to the remote ssh gateway.

Online URL:

<https://www.ezeelogin.com/kb/article/how-to-prevent-putty-window-from-closing-during-ssh-305.html>