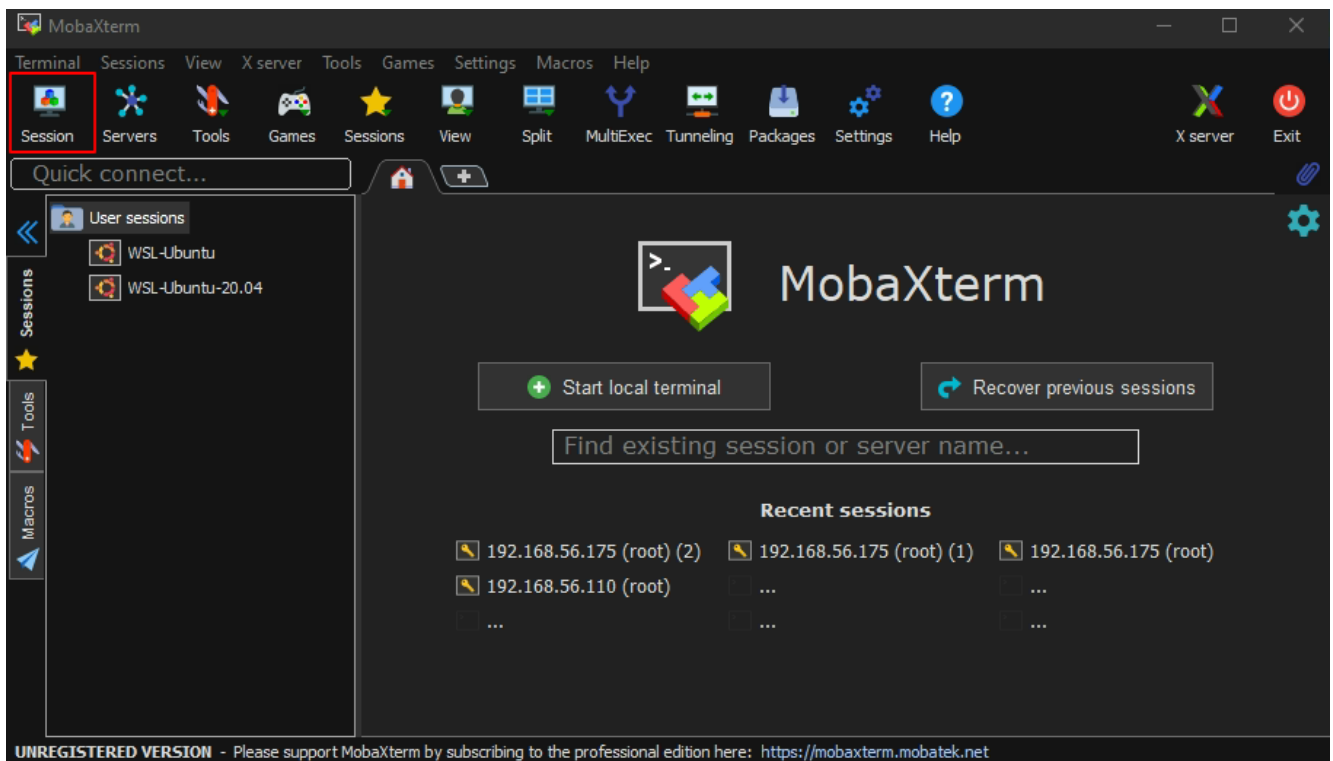


How to SSH to Ezeelogin Jumpserver using MobaXterm

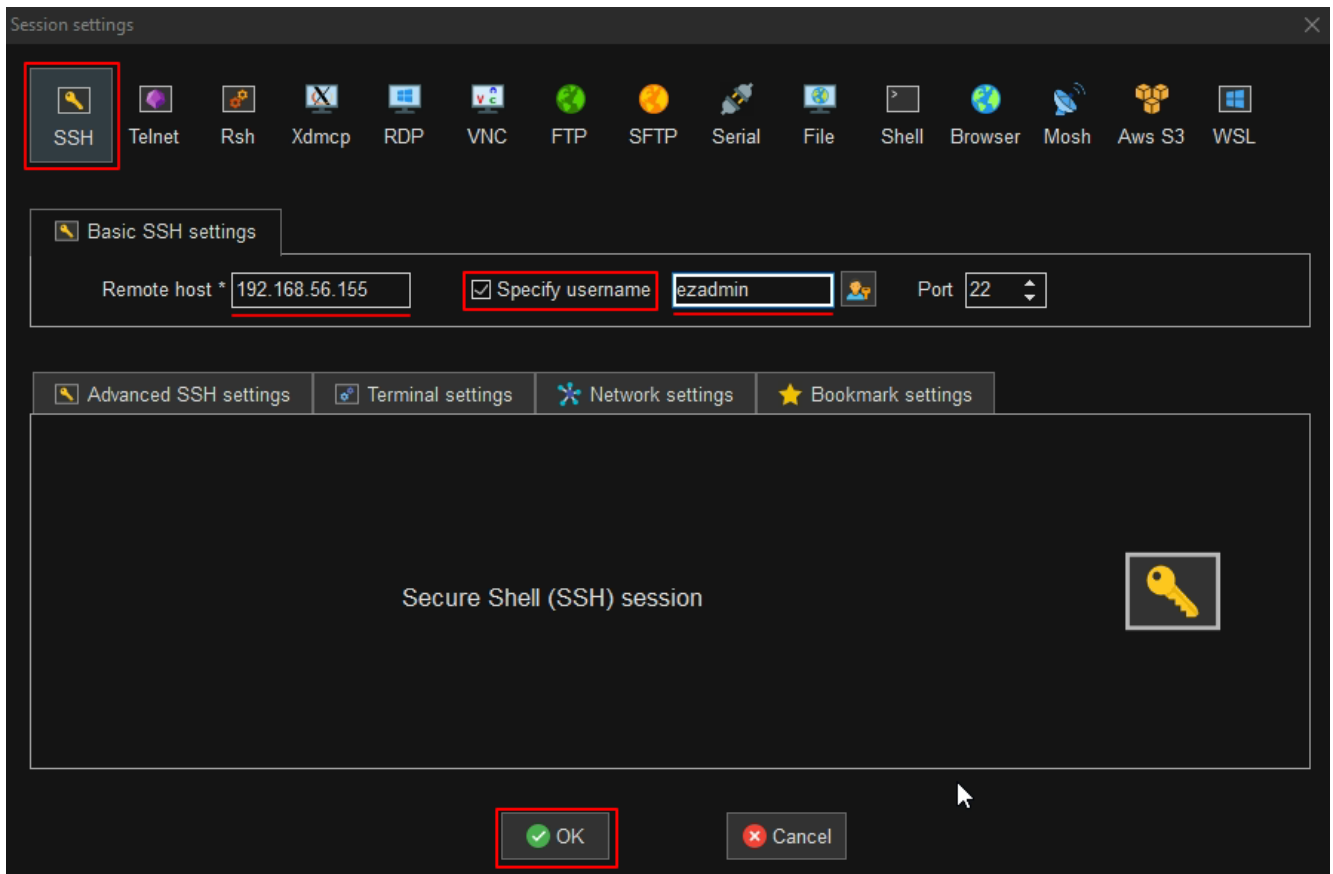
392 Nesvin KN August 25, 2022 [Features & Functionalities](#) 3651

How to SSH to Ezeelogin Jumpserver using MobaXterm?

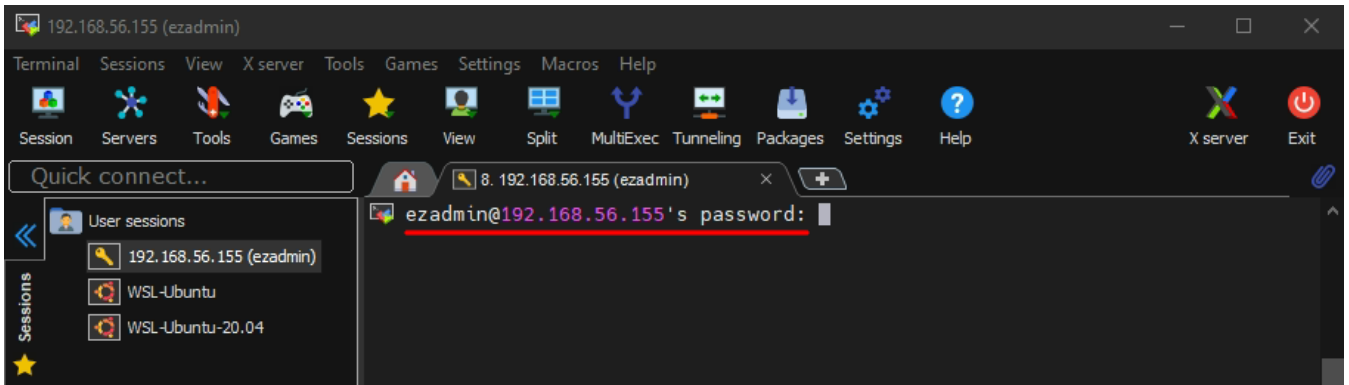
1. Click on the session tab and follow the below steps.



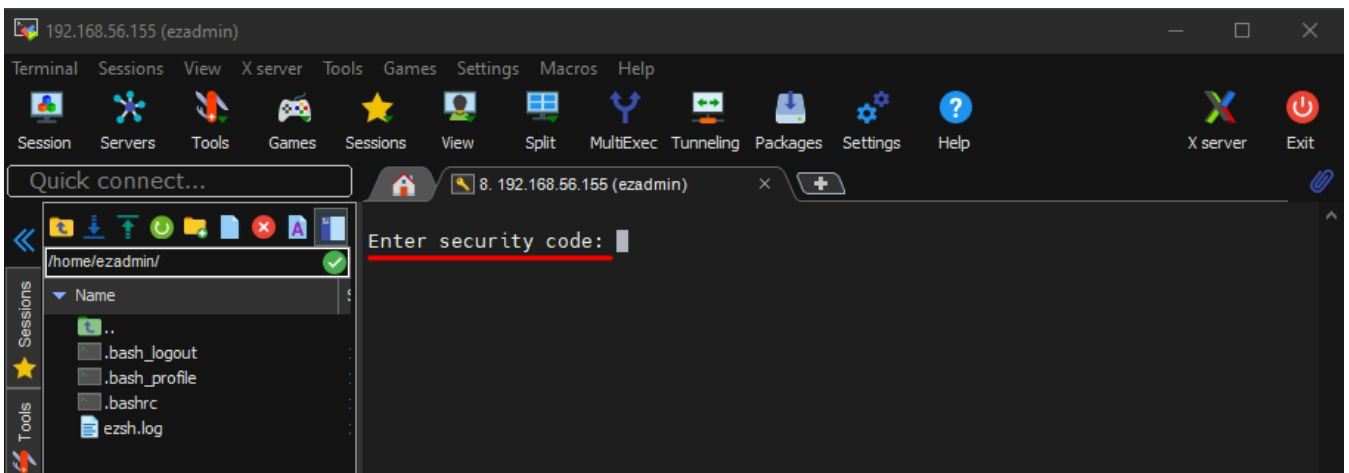
2. Click on the SSH tab then give Gateway IP and enable specify the username and give admin username in the field.

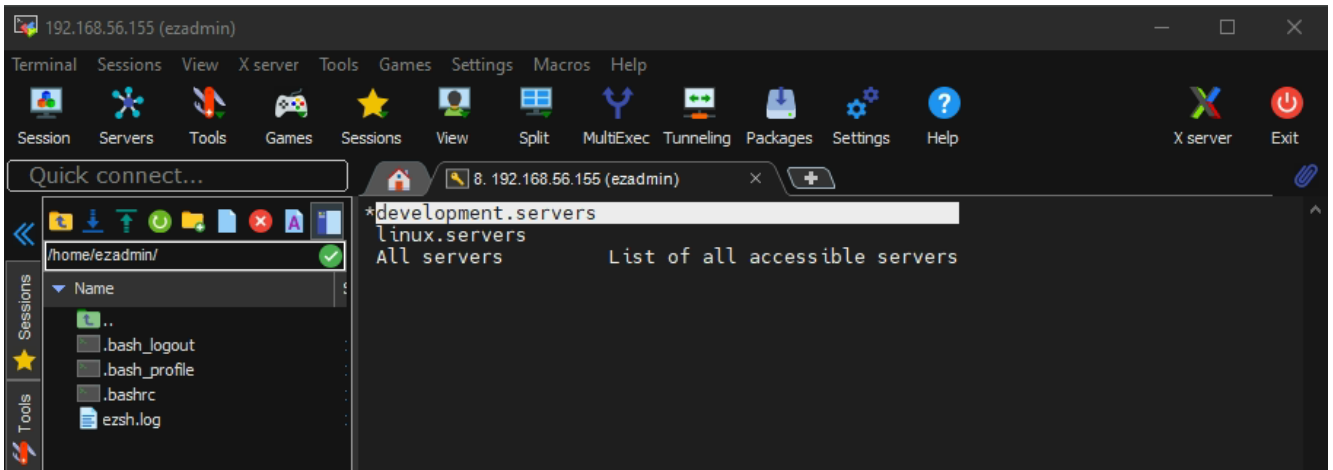


3. Enter Ezeelogin admin password.



4. Enter Security code / 2 Factor Authentication to login to Ezeelogin shell.





Online URL:

<https://www.ezeelogin.com/kb/article/how-to-ssh-to-ezeelogin-jumpserver-using-mobaxterm-392.html>