

Connection closed by remote host in Putty

547 Krishnaja March 19, 2025 [Common Errors & Troubleshooting](#) 4417



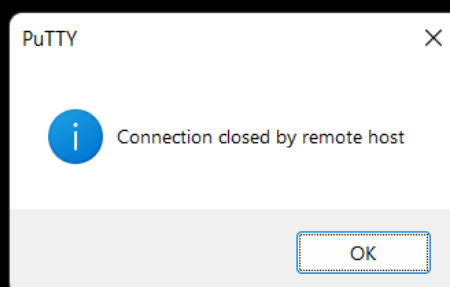
How to fix the error "Remote connection closed by host" in Putty?

Overview: This article explains how to resolve the error "Please login to Ezeelogin web panel and setup two-factor authentication" when accessing SSH clients like Putty, terminal, or command prompt.

How to fix "**Please login to Ezeelogin web panel and setup two-factor authentication.**" in SSH clients like Putty, terminal, command prompt, etc?



```
Please login to Ezeelogin web panel and setup two factor authentication.
```



This error occurs when the **user has not set two-factor authentication** when **force two-factor authentication** is enabled.

Login to Ezeelogin software GUI and set the prompting [two-factor authenticator](#) to fix the above error.

Related Articles:

[Enable/disable force two-factor authenticator](#)

[How to enable/disable google 2FA in Ezeelogin?](#)

[How to enable/disable DUO security in Ezeelogin?](#)

[How to enable/disable Yubikey in Ezeelogin?](#)

[How to enable/disable the Access keyword in Ezeelogin?](#)

[How to disable two-factor authentication from the backend?](#)

[How to prevent the putty window from closing during ssh?](#)

Online URL: <https://www.ezeelogin.com/kb/article/connection-closed-by-remote-host-in-putty-547.html>