

Integrate Azure AD in Ezeelogin jump server

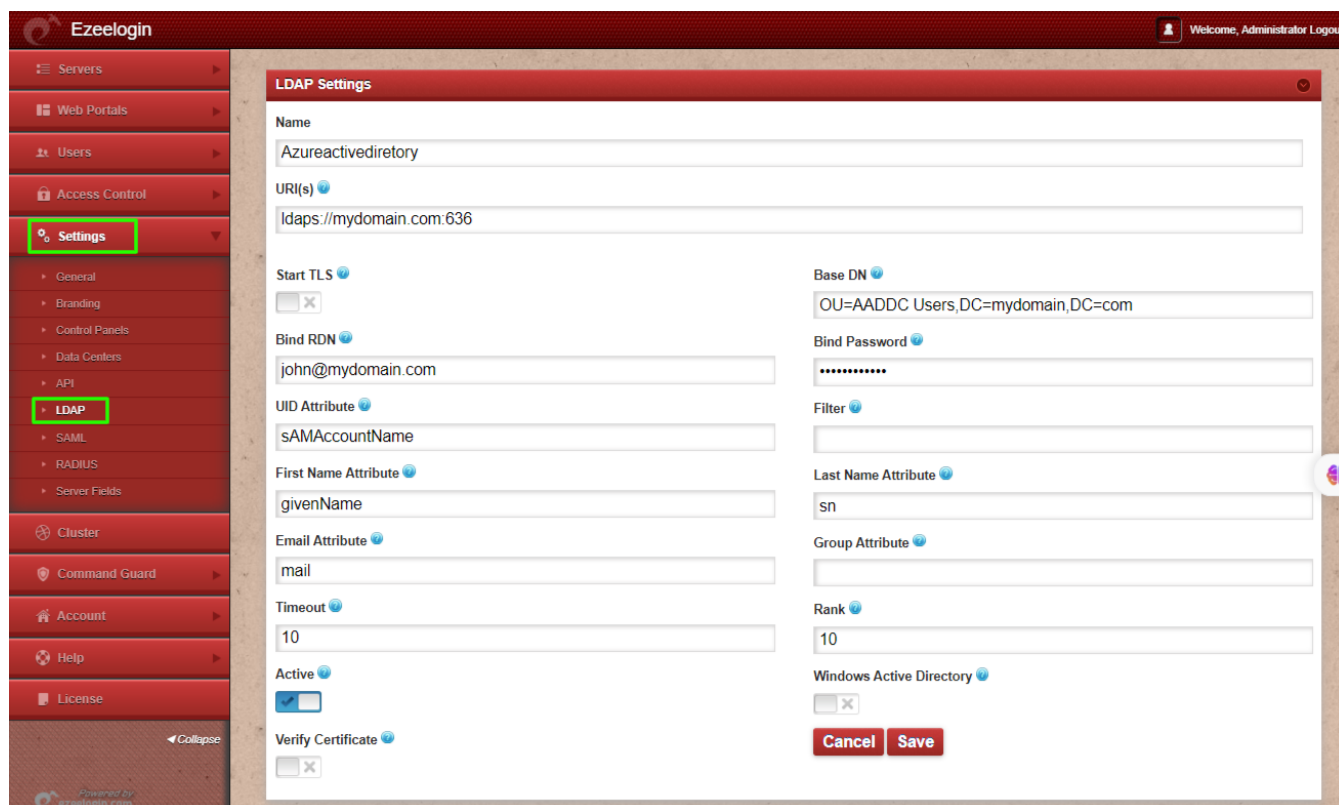
628 Manu Chacko May 15, 2025 [Features & Functionalities](#), [Tweaks & Configuration](#) 1649

How to Integrate Azure Active Directory Domain Service with LDAPS

Overview: This article helps to integrate Azure active directory domain service with LDAPS

Refer article to [enable LDAPS on Azure AD and integrate it into your application](#)

Step 1: Login to the Web GUI, navigate to **settings > Ldap** and add the details of LDAP configurations as follows.

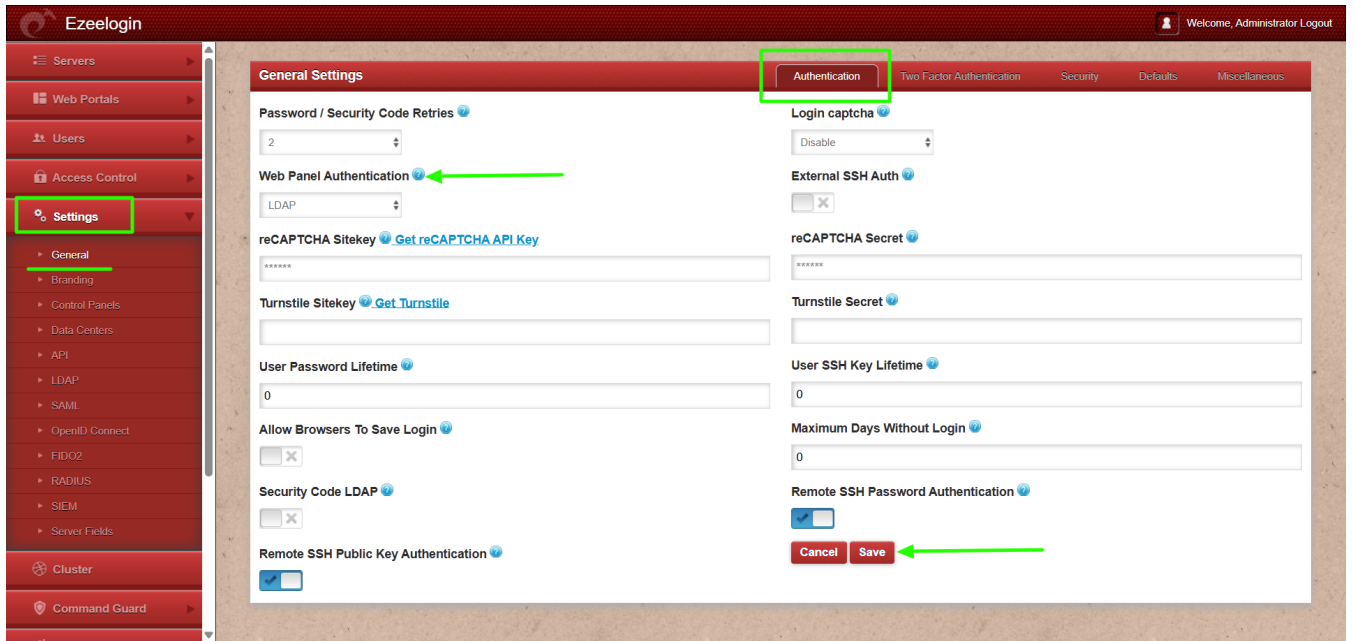


The screenshot displays the Ezeelogin Web GUI interface. On the left, a sidebar menu contains various system settings, with 'Settings' and 'LDAP' highlighted. The main content area is titled 'LDAP Settings' and contains the following fields:

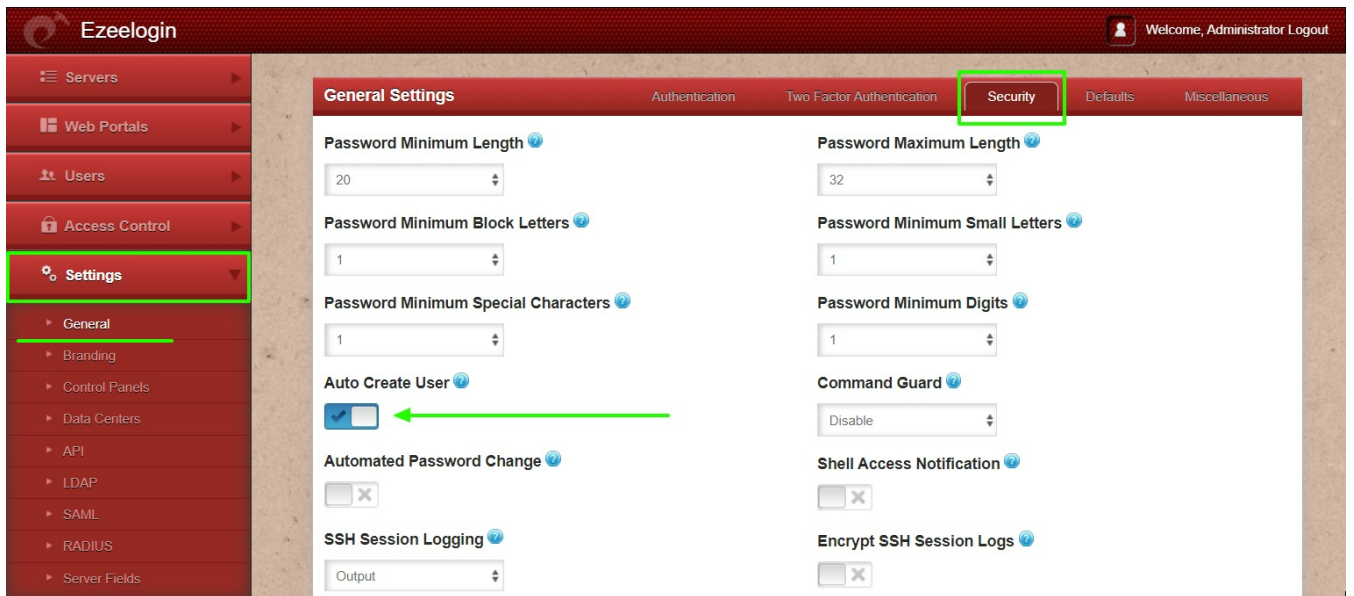
- Name:** Azureactivedirectory
- URI(s):** ldaps://mydomain.com:636
- Start TLS:** ☐
- Bind RDN:** john@mydomain.com
- UID Attribute:** sAMAccountName
- First Name Attribute:** givenName
- Email Attribute:** mail
- Timeout:** 10
- Active:** ☒
- Verify Certificate:** ☐
- Base DN:** OU=AADDC Users,DC=mydomain,DC=com
- Bind Password:** [masked]
- Filter:** [empty]
- Last Name Attribute:** sn
- Group Attribute:** [empty]
- Rank:** 10
- Windows Active Directory:** ☐

At the bottom right of the form are 'Cancel' and 'Save' buttons.

Step 2: Navigate to **Settings -> General -> Authentication -> change Web Panel Authentication to LDAP** and save.



Step 3: Enable Auto Create User from **web GUI** -> **Settings** -> **General** -> **Security** -> **Enable Auto Create User**, so the user will automatically created after successful authentication from Azure AD.



Step 4: Navigate to **Users** -> **LDAP** and click on the '+' button to import users into Ezeelogin.

Ezeelogin Welcome, Administrator Logout

Users in LDAP find... All

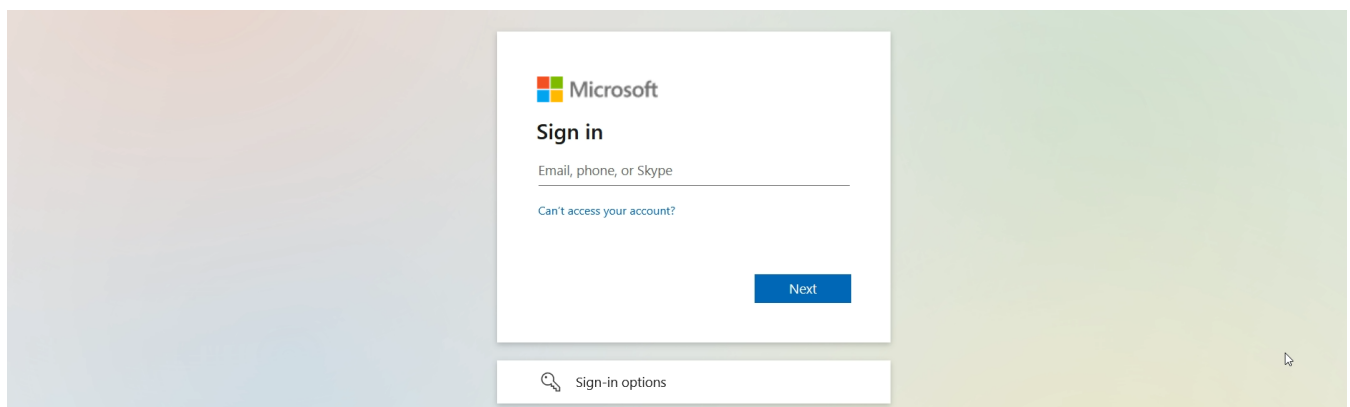
<input type="checkbox"/>	Username ↓	First Name	Last Name	Email	Status	User Group	LDAP	Notes
<input type="checkbox"/>	alex	alex			New	Dummy	Windows AD	
<input checked="" type="checkbox"/>	john	john			New	Dummy	Windows AD	
<input type="checkbox"/>	sam	sam			New	Dummy	Windows AD	
<input type="checkbox"/>	wick	wick			Exists	Dummy	Windows AD	

1 - 4 / 4

Users not in LDAP find... All

Username ↓	First Name	Last Name	Email	Status	User Group	Actions
No item						

Step 5: The imported LDAP users can be viewed under the users tab in the web GUI. You will be able to log in to web GUI with Azure AD user credentials.



Step 6: After logging with Azure AD user credentials set up [security code](#) for the user under **Account** -> **Password** -> **New Security Code**.

Step 7: Enable the **Security Code LDAP** option under **Settings -> General -> Authentication** if the user prefers not to log in to the web GUI to set up a security code.

Related Articles:

[Integrate azure AD with LDAP](#)

[Create users in Ezeelogin with the same user group in Azure AD](#)

[Unable to login with Azure SSO](#)

[Integrate Azure OpenID Connect](#)

[Integrating SSO/SAML with Ezeelogin PAM](#)

Online URL:

<https://www.ezeelogin.com/kb/article/integrate-azure-ad-in-ezeelogin-jump-server-628.html>